

Exterior Condensers

*Split System Air Conditioning Unit Matched Exterior Condenser

1. Schedule
Page 2
2. Product Data
Pages 2-4
3. Unit Dimensions
Pages 5-20

Split System Air Conditioning Unit Matched Exterior Condensers

Item	Size	Qty	Description	Model Number
DST 131	2 TON CU	1	2 TON CU	4TTR4024L1
DST 132	2.5 TON CU	1	2.5 TON CU	4TTR4030L1
DST 133	3 TON CU	1	3 TON CU	4TTR4036L1
DST 134	3 TON CU	1	3 TON CU 3 Ph	4TTA3036B3
DST 135	4 TON CU	1	4 TON CU	4TTR4048L1
DST 136	4 TON CU	1	4 TON CU 3 Ph	4TTA4048A3
DST 137	5 TON CU	1	5 TON CU	4TTR4048L1
DST 138	5 TON CU	1	5 TON CU 3 Ph	4TTA4060A3

DST 131 - 2 TON CU: Pairs with DST 127/128 G2-6/8 using 1 phase power

Split System Cooling Outdoor Unit
 2 Ton Nominal Cooling Capacity
 200 - 230 Volt 1 Phase 60 Hertz
 Evaporator defrost control (Fld)
 Head pressure control (Fld)

DST 132 - 2.5 TON CU: Pairs with DST 129 G2-10 using 1 phase power

Split System Cooling Outdoor Unit
 2.5 Ton Nominal Cooling Capacity
 200 - 230 Volt 1 Phase 60 Hertz
 Evaporator defrost control (Fld)
 Head pressure control (Fld)

DST 133 - 3 TON CU: Pairs with DST 130 G2-12 using 1 phase power

Split System Cooling Outdoor Unit
 3 Ton Nominal Cooling Capacity
 200 - 230 Volt 1 Phase 60 Hertz
 Evaporator defrost control (Fld)
 Head pressure control (Fld)

DST 134 - 3 TON CU: Pairs with DST 130 G2-12 using 3 phase power

Split System Cooling Outdoor Unit
 3 Ton Nominal Cooling Capacity
 200 - 230 Volt 3 Phase 60 Hertz
 Evaporator defrost control (Fld)
 Head pressure control (Fld)

DST 135 - 4 TON CU: Pairs with DST 124 G2-25 using 1 phase power

Split System Cooling Outdoor Unit
 4 Ton Nominal Cooling Capacity
 200 - 230 Volt 1 Phase 60 Hertz
 Evaporator defrost control (Fld)
 Head pressure control (Fld)

DST 136 - 4 TON CU: Pairs with DST 124 G2-25 using 3 phase power

Split System Cooling Outdoor Unit
4 Ton Nominal Cooling Capacity
200 - 230 Volt 3 Phase 60 Hertz
Evaporator defrost control (Fld)
Head pressure control (Fld)

DST 137 - 5 TON CU: Pairs with DST 124 G2-25 using 1 phase power

Split System Cooling Outdoor Unit
4 Ton Nominal Cooling Capacity
200 - 230 Volt 1 Phase 60 Hertz
Evaporator defrost control (Fld)
Head pressure control (Fld)

DST 138 - 5 TON CU: Pairs with DST 124 G2-25 using 3 phase power

Split System Cooling Outdoor Unit
5 Ton Nominal Cooling Capacity
200 - 230 Volt 3 Phase 60 Hertz
Evaporator defrost control (Fld)
Head pressure control (Fld)

4TTR4 (DST 131-133, 135, 137) - General

The Outdoor Units are fully charged from the factory for up to 15 feet of piping. This unit is designed to operate at outdoor ambient temperatures as high as 115F. Cooling capacities are matched with a wide selection of air handlers and furnace coils that are AHRI certified. The unit is certified to UL 1995. Exterior is designed for outdoor application.

4TTR4 (DST 131-133, 135, 137) - Casing

Unit casing is constructed of heavy gauge, G60 galvanized steel and painted with a weather resistant powder paint on all louvered panels and prepaint on all other panels. Corrosion and weatherproof CMBP-G30 base.

4TTR4 (DST 131-133, 135, 137) - Refrigerant Controls

Refrigeration system controls include condenser fan, compressor contactor and high pressure switch. High and low pressure controls are inherent to the compressor. A factory supplied liquid line drier is standard. Some models may require field installation.

4TTR4 (DST 131-133, 135, 137) - Compressor

The compressor features internal over temperature, pressure protection and total dipped hermetic motor. Other features include: Centrifugal oil pump and low vibration and noise.

4TTR4 (DST 131-133, 135, 137) - Condenser Coil

The outdoor coil provides low airflow resistance and efficient heat transfer. The coil is protected on all four sides by louvered panels.

4TTR4 (DST 131-133, 135, 137) - Low Ambient Cooling

As manufactured, this system has a cooling capacity to 55F. The addition of an evaporator defrost control permits operation to 40F. The addition of an evaporator defrost control with TXV permits low ambient cooling to 30F.

4TTA4 (DST 134, 136, 138) - General

The Outdoor Units are fully charged from the factory for up to 15 feet of piping. This unit is designed to operate at outdoor ambient temperatures as high as 115°F. Cooling capacities are matched with a wide selection of air handlers and furnace coils that are AHRI certified. The unit is certified to UL 1995. Exterior is designed for outdoor application.

4TTA4 (DST 134, 136, 138) - Casing

Unit casing is constructed of heavy gauge, galvanized steel and painted with a weather-resistant powder paint finish on all louvered panels and the fan top panel. The corner panels are prepainted. All panels are subjected to our 1,000 hour salt spray test. The base is made of a CMBP-G30 weatherproof material to resist corrosion.

4TTA4 (DST 134, 136, 138) - Refrigerant Controls

Refrigeration system controls include condenser fan, compressor contactor and high pressure switch. High and low pressure controls are inherent to the compressor. A factory supplied liquid line drier is standard. Some models may require field installation.

4TTA4 (DST 134, 136, 138) - Compressor

The compressor features internal over temperature, pressure protection and total dipped hermetic motor. Other features include: Centrifugal oil pump and low vibration and noise.

4TTA4 (DST 134, 136, 138) - Condenser Coil

The outdoor coil provides low airflow resistance and efficient heat transfer. The coil is protected on all four sides by louvered panels.

4TTA4 (DST 134, 136, 138) - Low Ambient Cooling

As manufactured, this system has a cooling capacity to 55°F. The addition of an evaporator defrost control permits operation to 40°F. The addition of an evaporator defrost control with TXV permits low ambient cooling to 30°F.

DST 131-138 Head Pressure Control Accessory

The Head Pressure Control (BAYLOAM***) accessory is a low voltage (24 Volts) electronic head pressure control that cycles the condenser fan motor based on liquid temperature. The addition of this field installed Head Pressure Control accessory permits cooling operation to 0 deg F [-17.8 deg C] providing that non-bleed TXV's, quick start components, and compressor crankcase heat are provided with the system when required.

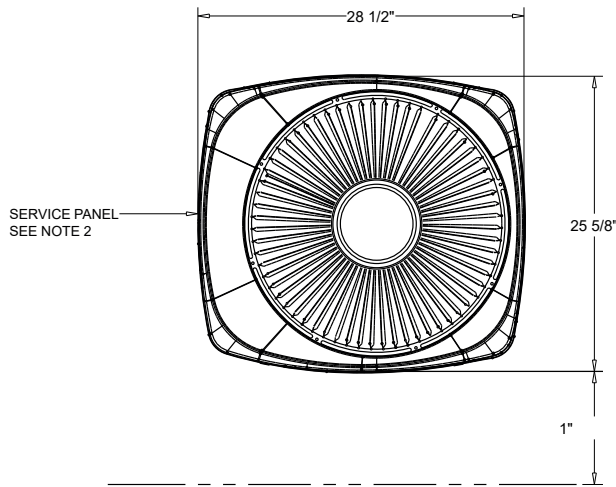
DST 131-138 Head Pressure Control

Controls fan motor (on/off) in response to outdoor ambient temperature in conjunction with liquid line temperature. Accessory provides unit cooling operation to outdoor temperatures of 0F

Unit Dimensions – Split System Air Conditioning Unit Matched Exterior Condensers

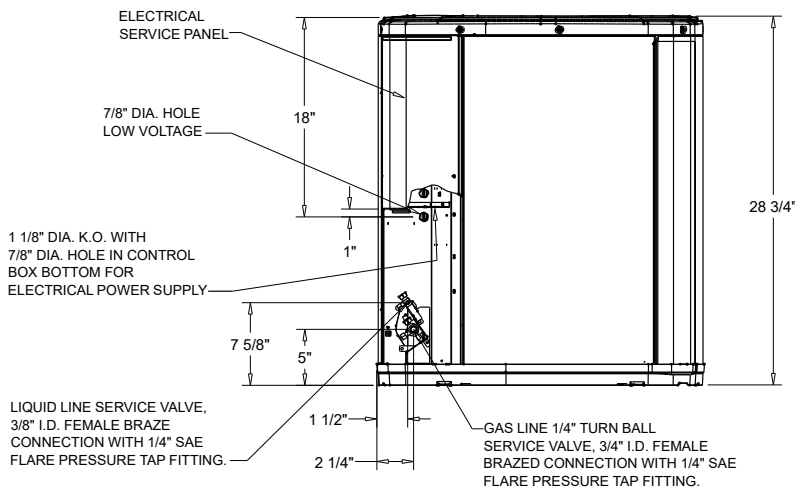
DST 131 - 2 TON CU: Pairs with DST 127/128 G2-6/8

208/230 1 ph

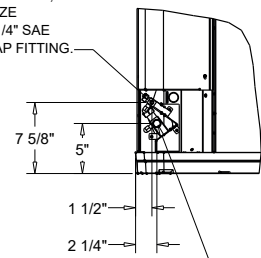


NOTES

1. TOP DISCHARGE AREA SHOULD BE UNRESTRICTED FOR AT LEAST 60" ABOVE UNIT. UNIT SHOULD BE PLACED SO ROOF RUN-OFF WATER DOES NOT POUR DIRECTLY ON UNIT, AND SHOULD BE AT LEAST 12" FROM WALL AND ALL SURROUNDING SHRUBBERY ON TWO SIDES. OTHER TWO SIDES UNRESTRICTED.
2. ELECTRICAL AND REFRIGERANT COMPONENT CLEARANCES PER PREVAILING CODES.



LIQUID LINE SERVICE VALVE,
3/8" I.D. FEMALE BRAZE
CONNECTION WITH 1/4" SAE
FLARE PRESSURE TAP FITTING.



GAS LINE SERVICE VALVE,
3/4" I.D. FEMALE BRAZED
CONNECTION WITH 1/4" SAE
FLARE PRESSURE TAP FITTING.

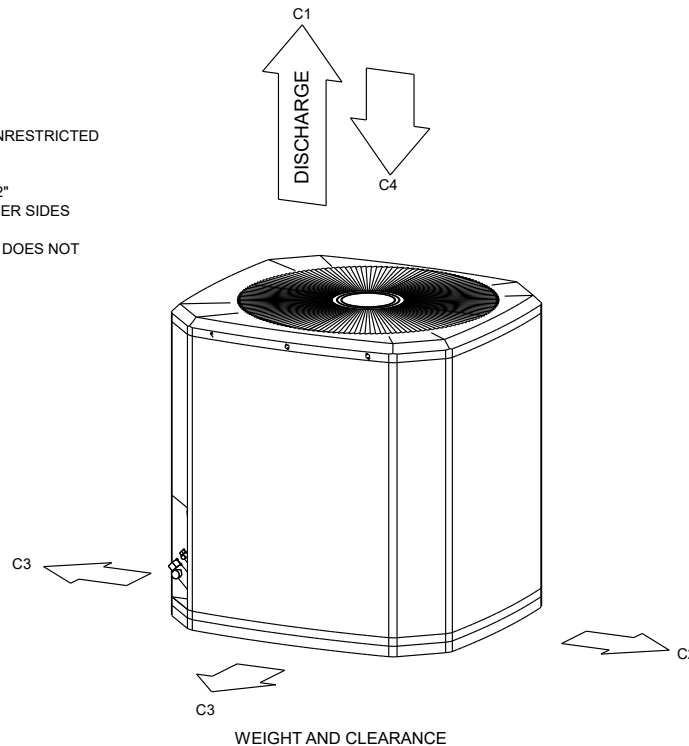
Unit Dimensions – Split System Air Conditioning Unit Matched Exterior Condenser
DST 131 - 2 TON CU: Pairs with DST 127/128 G2-6/8
208/230 1 ph

ELECTRICAL / GENERAL DATA

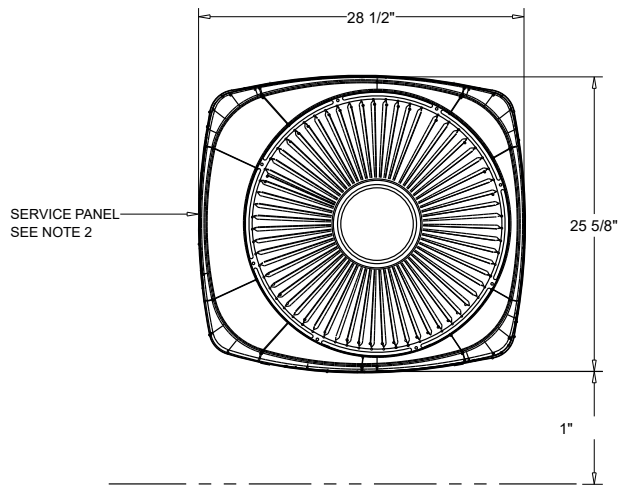
<p>GENERAL</p> <p>Model: 4TTR4024 Voltage: 208 - 230 Unit Hertz: 60 Unit Phase: 1</p>	<p>POWER CONN.</p> <p>Minimum Circuit Ampacity: 14.0 Maximum Circuit Breaker: 25.0 Minimum Protection Rating: 25.0</p>	<p>COMPRESSOR</p> <p>Number: 1 Phase: 1 Rated Load Amps: 10.9 Locked Rotor Amps: 63.0</p>
<p>OUTDOOR MOTOR</p> <p>Number: 1 Horsepower: 0.06 Motor Speed (RPM): - Phase: 1 Full Load Amps: 0.60 Locked Rotor Amps: -</p>	<p>NOTES:</p> <ol style="list-style-type: none"> 1. Certified in accordance with the Unitary Air-Conditioner equipment certification program which is based on AHRI Standard 210/240. 2. Calculated in accordance with N.E.C. Use only HACR circuit breakers or fuses. 3. Standard line lengths - 60'. Standard lift - 60' Suction and Liquid line. For Greater lengths and lifts refer to refrigerant piping software Pub# 32-3312-0 4. * = 15, 20, 25, 30, 40 and 50 foot lineset available. 	
<p>REFRIGERANT</p> <p>Type: R-410 Charge: 4.7 lb Line Size O.D. Gas: 3/4" Line Size O.D. LIQ: 3/8"</p>		

WEIGHT	
NET	133.0 lb
SHIPPING	153.0 lb

- NOTES:**
- C1. TOP DISCHARGE SHOULD BE UNRESTRICTED FOR AT LEAST 60" ABOVE UNIT
 - C2. PLACE UNIT FROM WALL
 - C3. PLACE SHRUBBERY AT LEAST 12" FROM UNIT ON TWO SIDES, OTHER SIDES UNRESTRICTED
 - C4. PLACE UNIT SO ROOF RUN-OFF DOES NOT FALL DIRECTLY ON UNIT

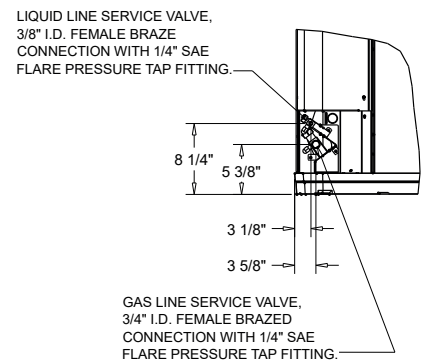
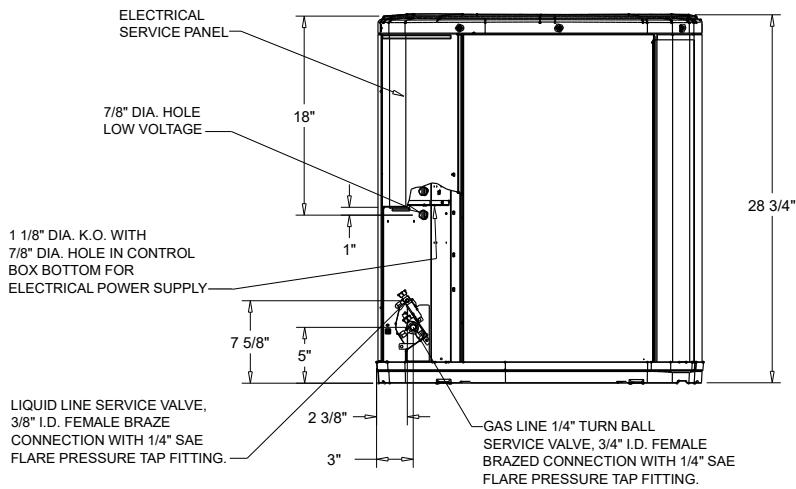


Unit Dimensions – Split System Air Conditioning Unit Matched Exterior Condensers
DST 132 - 2.5 TON CU: Pairs with DST 129 G2-10
208/230 1 ph



NOTES

1. TOP DISCHARGE AREA SHOULD BE UNRESTRICTED FOR AT LEAST 60" ABOVE UNIT. UNIT SHOULD BE PLACED SO ROOF RUN-OFF WATER DOES NOT POUR DIRECTLY ON UNIT, AND SHOULD BE AT LEAST 12" FROM WALL AND ALL SURROUNDING SHRUBBERY ON TWO SIDES. OTHER TWO SIDES UNRESTRICTED.
2. ELECTRICAL AND REFRIGERANT COMPONENT CLEARANCES PER PREVAILING CODES.



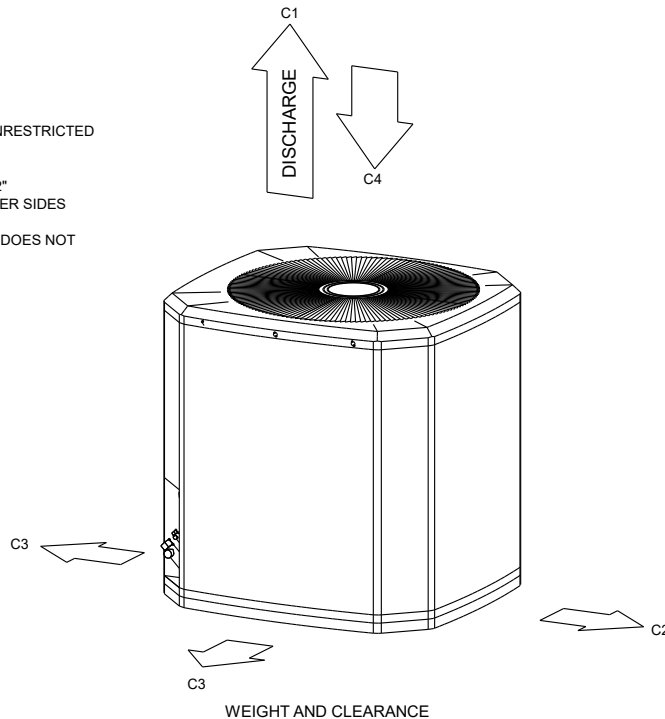
Unit Dimensions – Split System Air Conditioning Unit Matched Exterior Condensers
DST 132 - 2.5 TON CU: Pairs with DST 129 G2-10
208/230 1 ph

ELECTRICAL / GENERAL DATA

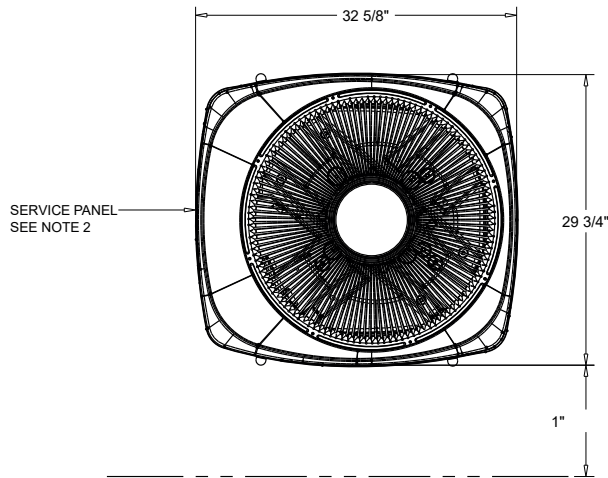
<p>GENERAL</p> <p>Model: 4TTR4030 Voltage: 208 - 230 Unit Hertz: 60 Unit Phase: 1</p>	<p>POWER CONN.</p> <p>Minimum Circuit Ampacity: 17.0 Maximum Circuit Breaker: 25.0 Minimum Protection Rating: 25.0</p>	<p>COMPRESSOR</p> <p>Number: 1 Phase: 1 Rated Load Amps: 12.8 Locked Rotor Amps: 68.0</p>
<p>OUTDOOR MOTOR</p> <p>Number: 1 Horsepower: 0.125 Motor Speed (RPM): - Phase: 1 Full Load Amps: 0.64 Locked Rotor Amps: -</p>	<p>NOTES:</p> <ol style="list-style-type: none"> 1. Certified in accordance with the Unitary Air-Conditioner equipment certification program which is based on AHRI Standard 210/240. 2. Calculated in accordance with N.E.C. Use only HACR circuit breakers or fuses. 3. Standard line lengths - 60'. Standard lift - 60' Suction and Liquid line. For Greater lengths and lifts refer to refrigerant piping software Pub# 32-3312-0 4. * = 15, 20, 25, 30, 40 and 50 foot lineset available. 	
<p>REFRIGERANT</p> <p>Type: R-410 Charge: 5.3 lb Line Size O.D. Gas: 3/4" Line Size O.D. LIQ: 3/8"</p>		

WEIGHT	
NET	156.0 lb
SHIPPING	183.0 lb

- NOTES:**
- C1. TOP DISCHARGE SHOULD BE UNRESTRICTED FOR AT LEAST 60" ABOVE UNIT
 - C2. PLACE UNIT FROM WALL
 - C3. PLACE SHRUBBERY AT LEAST 12" FROM UNIT ON TWO SIDES, OTHER SIDES UNRESTRICTED
 - C4. PLACE UNIT SO ROOF RUN-OFF DOES NOT FALL DIRECTLY ON UNIT

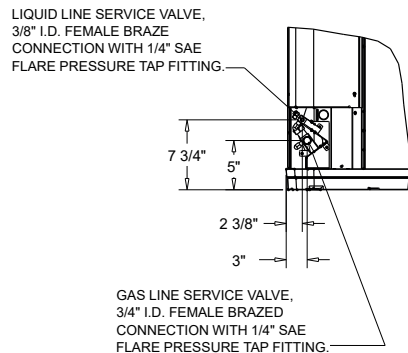
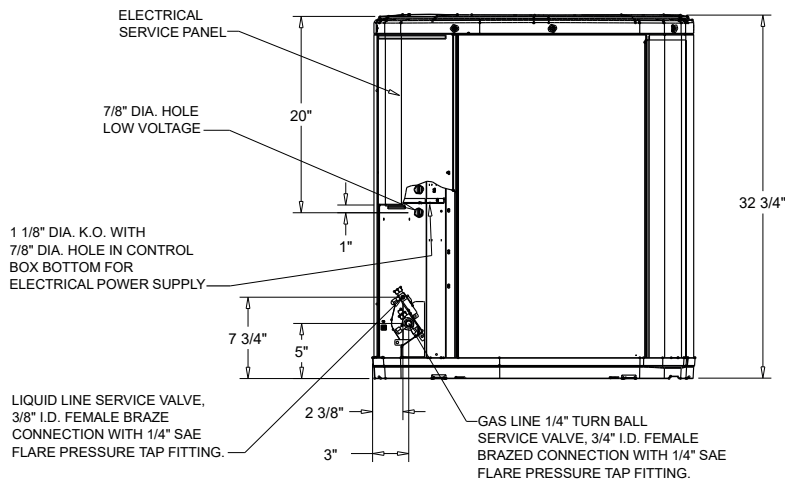


Unit Dimensions – Split System Air Conditioning Unit Matched Exterior Condensers
DST 133 - 3 TON CU: Pairs with DST 130 G2-12
208/230 1 ph



NOTES

1. TOP DISCHARGE AREA SHOULD BE UNRESTRICTED FOR AT LEAST 60" ABOVE UNIT. UNIT SHOULD BE PLACED SO ROOF RUN-OFF WATER DOES NOT POUR DIRECTLY ON UNIT, AND SHOULD BE AT LEAST 12" FROM WALL AND ALL SURROUNDING SHRUBBERY ON TWO SIDES. OTHER TWO SIDES UNRESTRICTED.
2. ELECTRICAL AND REFRIGERANT COMPONENT CLEARANCES PER PREVAILING CODES.



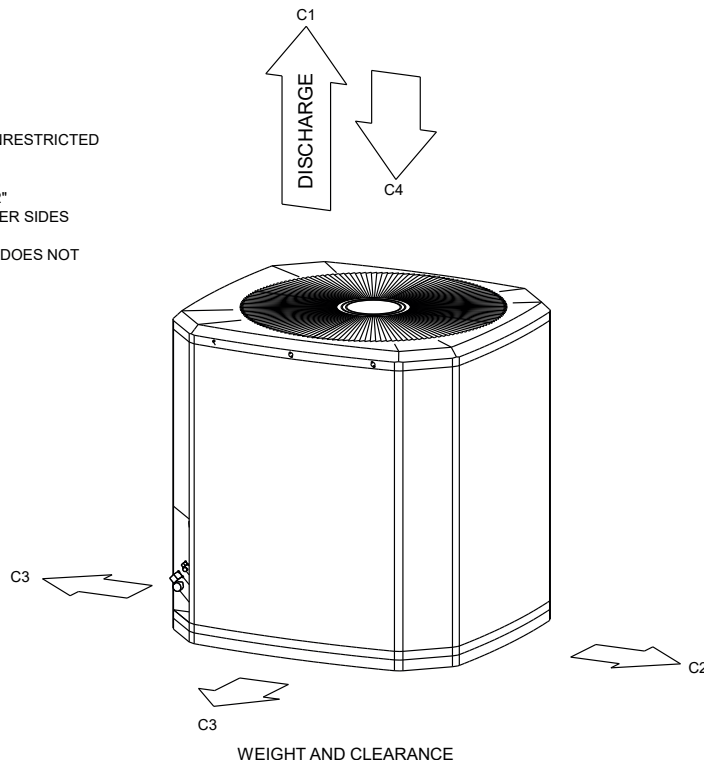
Unit Dimensions – Split System Air Conditioning Unit Matched Exterior Condensers
DST 133 - 3 TON CU: Pairs with DST 130 G2-12
208/230 1 ph

ELECTRICAL / GENERAL DATA

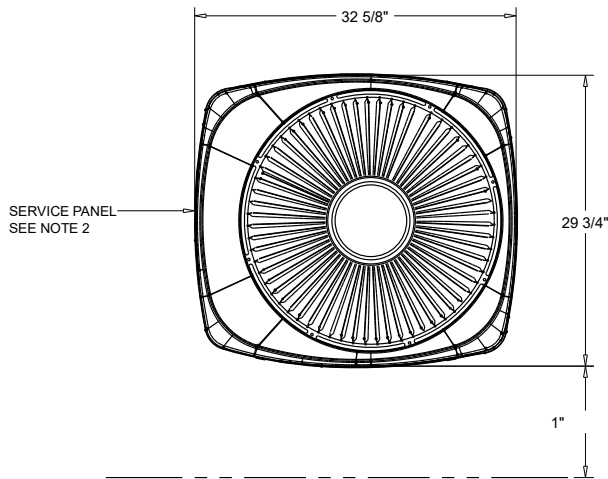
<p>GENERAL</p> <p>Model: 4TTR4036 Voltage: 208 - 230 Unit Hertz: 60 Unit Phase: 1</p>	<p>POWER CONN.</p> <p>Minimum Circuit Ampacity: 18.0 Maximum Circuit Breaker: 30.0 Minimum Protection Rating: 30.0</p>	<p>COMPRESSOR</p> <p>Number: 1 Phase: 1 Rated Load Amps: 14.1 Locked Rotor Amps: 72.0</p>
<p>OUTDOOR MOTOR</p> <p>Number: 1 Horsepower: 0.125 Motor Speed (RPM): - Phase: 1 Full Load Amps: 0.64 Locked Rotor Amps: -</p>	<p>NOTES:</p> <p>1. Certified in accordance with the Unitary Air-Conditioner equipment certification program which is based on AHRI Standard 210/240. 2. Calculated in accordance with N.E.C. Use only HACR circuit breakers or fuses. 3. Standard line lengths - 60'. Standard lift - 60' Suction and Liquid line. For Greater lengths and lifts refer to refrigerant piping software Pub# 32-3312-0 4. * = 15, 20, 25, 30, 40 and 50 foot lineset available.</p>	
<p>REFRIGERANT</p> <p>Type: R-410 Charge: 6.1 lb Line Size O.D. Gas: 3/4" Line Size O.D. LIQ: 3/8"</p>		

WEIGHT	
NET	156.0 lb
SHIPPING	183.0 lb

- NOTES:**
- C1. TOP DISCHARGE SHOULD BE UNRESTRICTED FOR AT LEAST 60" ABOVE UNIT
 - C2. PLACE UNIT FROM WALL
 - C3. PLACE SHRUBBERY AT LEAST 12" FROM UNIT ON TWO SIDES, OTHER SIDES UNRESTRICTED
 - C4. PLACE UNIT SO ROOF RUN-OFF DOES NOT FALL DIRECTLY ON UNIT



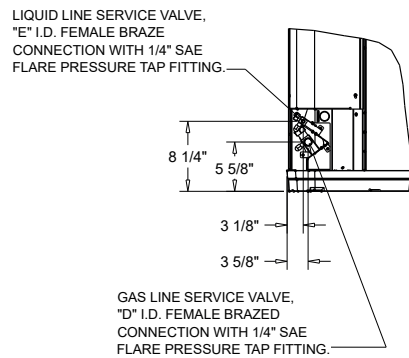
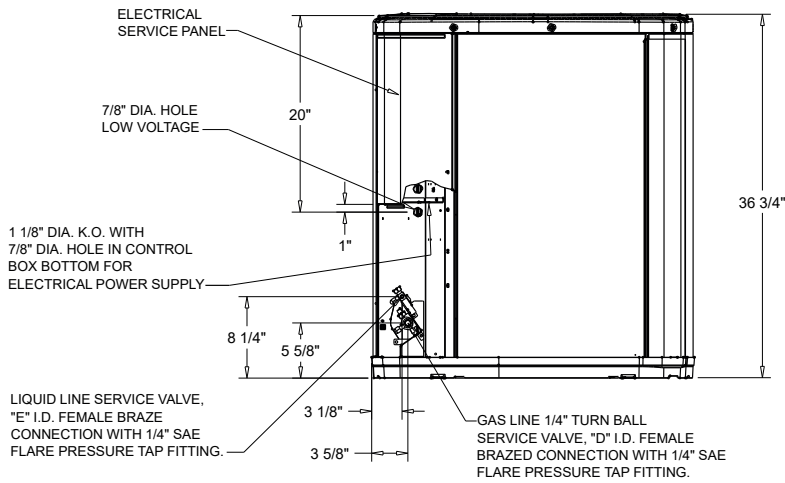
Unit Dimensions – Split System Air Conditioning Unit Matched Exterior Condensers
DST 134 - 3 TON CU: Pairs with DST 130 G2-12
208/230 3 ph



UNIT DIMENSTIONS	
DIM - D	3/4"
DIM - E	5/16"

NOTES

1. TOP DISCHARGE AREA SHOULD BE UNRESTRICTED FOR AT LEAST 60" ABOVE UNIT. UNIT SHOULD BE PLACED SO ROOF RUN-OFF WATER DOES NOT POUR DIRECTLY ON UNIT, AND SHOULD BE AT LEAST 12" FROM WALL AND ALL SURROUNDING SHRUBBERY ON TWO SIDES. OTHER TWO SIDES UNRESTRICTED.
2. ELECTRICAL AND REFRIGERANT COMPONENT CLEARANCES PER PREVAILING CODES.



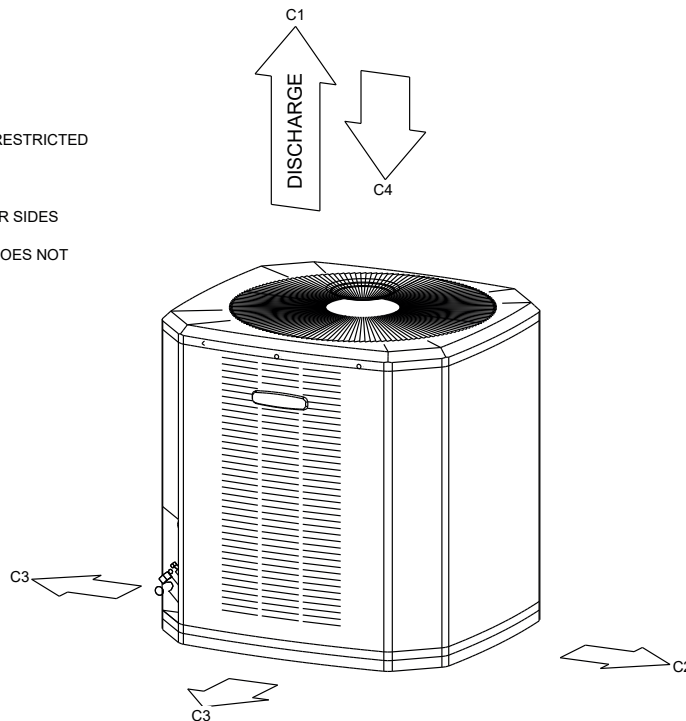
Unit Dimensions – Split System Air Conditioning Unit Matched Exterior Condensers
DST 134 - 3 TON CU: Pairs with DST 130 G2-12
208/230 3 ph

ELECTRICAL / GENERAL DATA

<p>GENERAL</p> <p>Model: 4TTA3036* Operating Voltage: 187-253 Unit Primary Voltage: 208 Unit Secondary Voltage: 230 Unit Hertz: 60 Unit Phase: 3</p>	<p>POWER CONN.</p> <p>Minimum Circuit Ampacity: 14.0 Maximum Circuit Breaker: 20.0 Minimum Protection Rating: 20.0</p>	<p>COMPRESSOR</p> <p>Number: 1 Phase: 3 Rated Load Amps: 11.5 Locked Rotor Amps: 77.0</p>
<p>OUTDOOR MOTOR</p> <p>Number: 1 Horsepower: 0.125 Motor Speed (RPM): 825 Phase: 3 Full Load Amps: 0.7 Locked Rotor Amps: -</p>	<p>NOTES:</p> <p>1. Certified in accordance with the Unitary Air-Conditioner equipment certification program which is based on AHRI Standard 210/240. 2. Calculated in accordance with N.E.C. Use only HACR circuit breakers or fuses. 3. Standard line lengths - 60'. Standard lift - 60' Suction and Liquid line. For Greater lengths and lifts refer to refrigerant piping software Pub# 32-3312-0 4. * = 15, 20, 25, 30, 40 and 50 foot lineset available.</p>	
<p>REFRIGERANT</p> <p>Type: R-410 Charge: 6.4 lb Line Size O.D. Gas: 3/4" Line Size O.D. LIQ: 3/8"</p>		

WEIGHT	
NET	201.0 lb
SHIPPING	229.0 lb

- NOTES:**
- C1. TOP DISCHARGE SHOULD BE UNRESTRICTED FOR AT LEAST 60" ABOVE UNIT
 - C2. PLACE UNIT FROM WALL
 - C3. PLACE SHRUBBERY AT LEAST 12" FROM UNIT ON TWO SIDES, OTHER SIDES UNRESTRICTED
 - C4. PLACE UNIT SO ROOF RUN-OFF DOES NOT FALL DIRECTLY ON UNIT

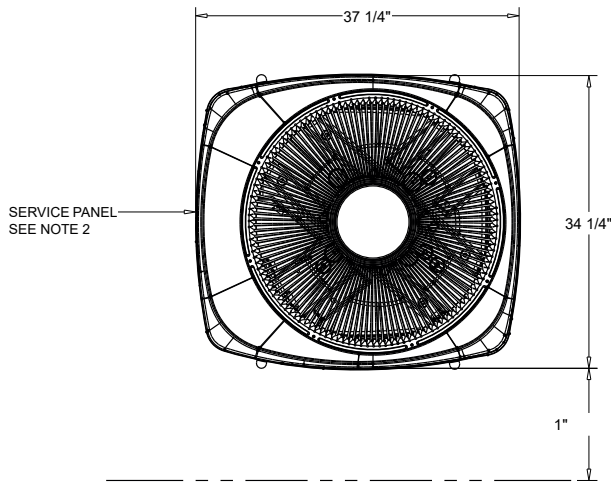


WEIGHT AND CLEARANCE

Unit Dimensions – Split System Air Conditioning Unit Matched Exterior Condensers

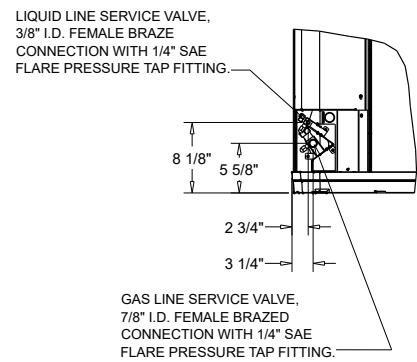
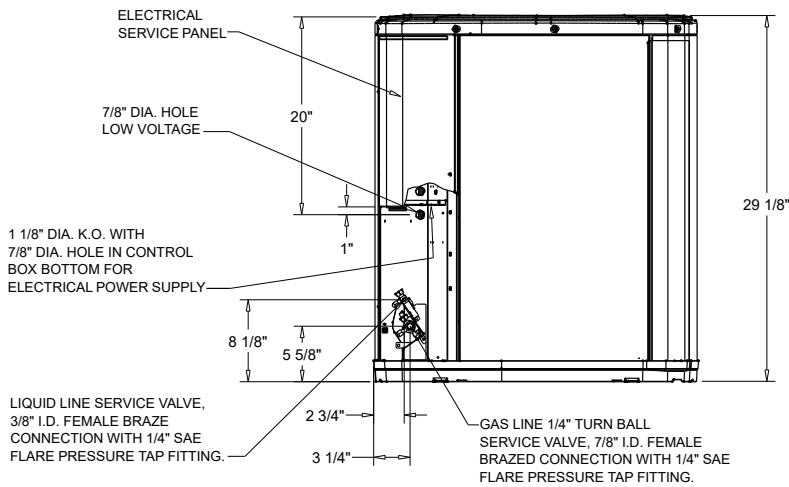
DST 135 - 4 TON CU: Pairs with DST 124 G2-25

208/230 1 ph



NOTES

1. TOP DISCHARGE AREA SHOULD BE UNRESTRICTED FOR AT LEAST 60° ABOVE UNIT. UNIT SHOULD BE PLACED SO ROOF RUN-OFF WATER DOES NOT POUR DIRECTLY ON UNIT, AND SHOULD BE AT LEAST 12" FROM WALL AND ALL SURROUNDING SHRUBBERY ON TWO SIDES. OTHER TWO SIDES UNRESTRICTED.
2. ELECTRICAL AND REFRIGERANT COMPONENT CLEARANCES PER PREVAILING CODES.



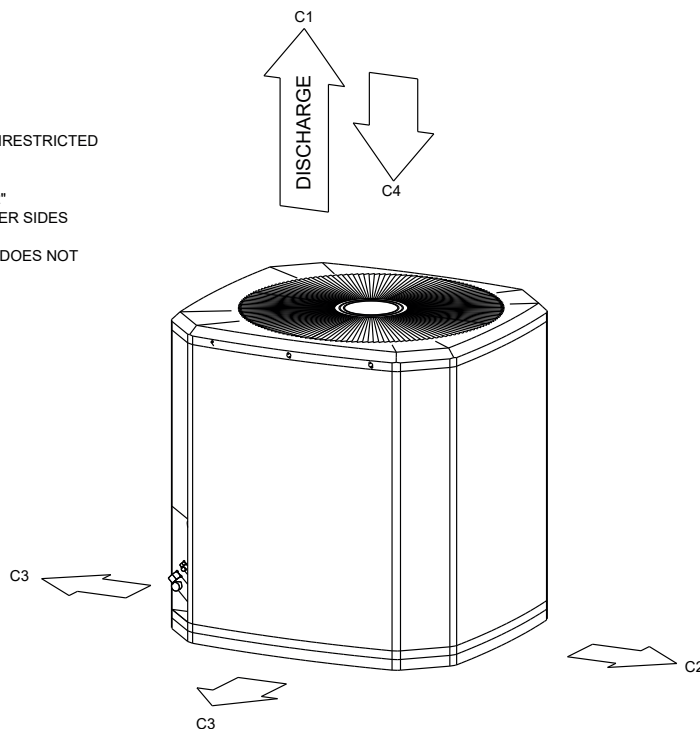
Unit Dimensions – Split System Air Conditioning Unit Matched Exterior Condensers
DST 135 - 4 TON CU: Pairs with DST 124 G2-25
208/230 1 ph

ELECTRICAL / GENERAL DATA

<p>GENERAL</p> <p>Model: 4TTR4048 Voltage: 208 - 230 Unit Hertz: 60 Unit Phase: 1</p>	<p>POWER CONN.</p> <p>Minimum Circuit Ampacity: 24.0 Maximum Circuit Breaker: 40.0 Minimum Protection Rating: 40.0</p>	<p>COMPRESSOR</p> <p>Number: 1 Phase: 1 Rated Load Amps: 18.5 Locked Rotor Amps: 124.0</p>
<p>OUTDOOR MOTOR</p> <p>Number: 1 Horsepower: 0.20 Motor Speed (RPM): - Phase: 1 Full Load Amps: 0.95 Locked Rotor Amps: -</p>	<p>NOTES:</p> <ol style="list-style-type: none"> 1. Certified in accordance with the Unitary Air-Conditioner equipment certification program which is based on AHRI Standard 210/240. 2. Calculated in accordance with N.E.C. Use only HACR circuit breakers or fuses. 3. Standard line lengths - 60'. Standard lift - 60' Suction and Liquid line. For Greater lengths and lifts refer to refrigerant piping software Pub# 32-3312-0 4. * = 15, 20, 25, 30, 40 and 50 foot lineset available. 	
<p>REFRIGERANT</p> <p>Type: R-410 Charge: 6.6 lb Line Size O.D. Gas: 7/8" Line Size O.D. LIQ: 3/8"</p>		

WEIGHT	
NET	*189.0 lb
SHIPPING	*212.0 lb

- NOTES:**
- C1. TOP DISCHARGE SHOULD BE UNRESTRICTED FOR AT LEAST 60" ABOVE UNIT
 - C2. PLACE UNIT FROM WALL
 - C3. PLACE SHRUBBERY AT LEAST 12" FROM UNIT ON TWO SIDES, OTHER SIDES UNRESTRICTED
 - C4. PLACE UNIT SO ROOF RUN-OFF DOES NOT FALL DIRECTLY ON UNIT

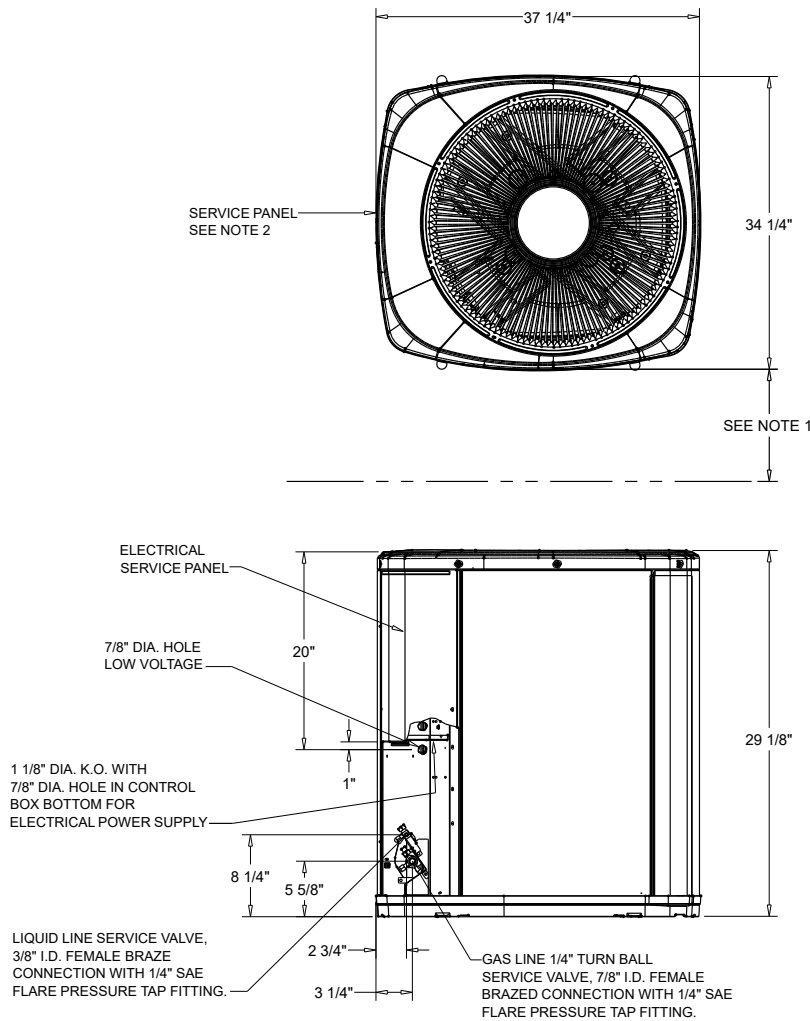


WEIGHT AND CLEARANCE

Unit Dimensions – Split System Air Conditioning Unit Matched Exterior Condensers
DST 136 - 4 TON CU: Pairs with DST 124 G2-25
208/230 3 ph

NOTES

1. TOP DISCHARGE AREA SHOULD BE UNRESTRICTED FOR AT LEAST 60" ABOVE UNIT. UNIT SHOULD BE PLACED SO ROOF RUN-OFF WATER DOES NOT POUR DIRECTLY ON UNIT, AND SHOULD BE AT LEAST 12" FROM WALL AND ALL SURROUNDING SHRUBBERY ON TWO SIDES. OTHER TWO SIDES UNRESTRICTED.
2. ELECTRICAL AND REFRIGERANT COMPONENT CLEARANCES PER PREVAILING CODES.
3. VERIFY WEIGHT, CONNECTION, AND ALL DIMENSION WITH INSTALLER DOCUMENTS BEFORE INSTALLATION



4TTA4048
 OUTLINE DRAWING

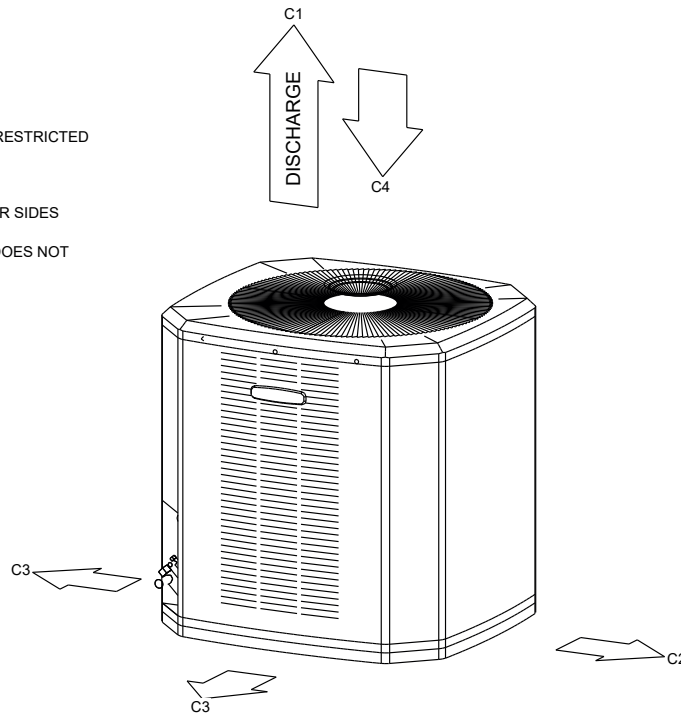
Unit Dimensions – Split System Air Conditioning Unit Matched Exterior Condensers
DST 136 - 4 TON CU: Pairs with DST 124 G2-25
208/230 3 ph

ELECTRICAL / GENERAL DATA

<p>GENERAL</p> <p>Model: 4TTA4048A3000A Operating Voltage: 187-253 Unit Primary Voltage: 208 Unit Secondary Voltage: 230 Unit Hertz: 60 Unit Phase: 3</p>	<p>POWER CONN.</p> <p>Minimum Circuit Ampacity: 18.0 Maximum Circuit Breaker: 30.0 Minimum Protection Rating: 30.0</p>	<p>COMPRESSOR</p> <p>Number: 1 Phase: 3 Rated Load Amps: 13.8 Locked Rotor Amps: 83.0</p>
<p>OUTDOOR MOTOR</p> <p>Number: 1 Horsepower: 0.20 Motor Speed (RPM): - Phase: 1 Full Load Amps: 1.05 Locked Rotor Amps: -</p>	<p>NOTES:</p> <p>1. Certified in accordance with the Unitary Air-Conditioner equipment certification program which is based on AHRI Standard 210/240. 2. Calculated in accordance with N.E.C. Use only HACR circuit breakers or fuses. 3. Standard line lengths - 60'. Standard lift - 60' Suction and Liquid line. For Greater lengths and lifts refer to refrigerant piping software Pub# 32-3312-0 4. * = 15, 20, 25, 30, 40 and 50 foot lineset available.</p>	
<p>REFRIGERANT</p> <p>Type: R-410A Charge: 6.6 lb Line Size O.D. Gas: 7/8" Line Size O.D. LIQ: 3/8"</p>		

WEIGHT	
NET	189.0 lb
SHIPPING	212.0 lb

- NOTES:**
- C1. TOP DISCHARGE SHOULD BE UNRESTRICTED FOR AT LEAST 60" ABOVE UNIT
 - C2. PLACE UNIT FROM WALL
 - C3. PLACE SHRUBBERY AT LEAST 12" FROM UNIT ON TWO SIDES, OTHER SIDES UNRESTRICTED
 - C4. PLACE UNIT SO ROOF RUN-OFF DOES NOT FALL DIRECTLY ON UNIT

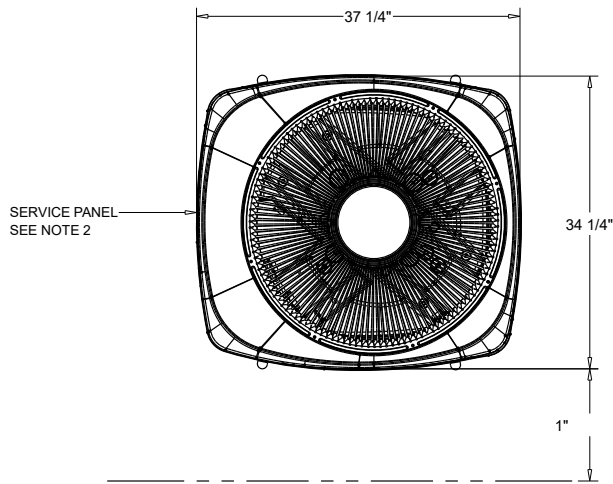


WEIGHT AND CLEARANCE

Unit Dimensions – Split System Air Conditioning Unit Matched Exterior Condensers

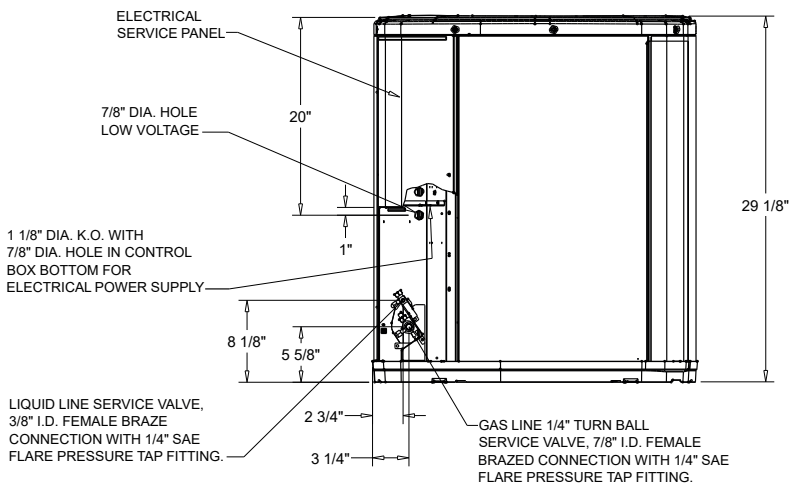
DST 137 - 5 TON CU: Pairs with DST 124 G2-25

208/230 1 ph

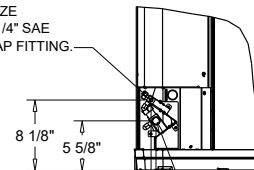


NOTES

1. TOP DISCHARGE AREA SHOULD BE UNRESTRICTED FOR AT LEAST 60" ABOVE UNIT. UNIT SHOULD BE PLACED SO ROOF RUN-OFF WATER DOES NOT POUR DIRECTLY ON UNIT, AND SHOULD BE AT LEAST 12" FROM WALL AND ALL SURROUNDING SHRUBBERY ON TWO SIDES. OTHER TWO SIDES UNRESTRICTED.
2. ELECTRICAL AND REFRIGERANT COMPONENT CLEARANCES PER PREVAILING CODES.



LIQUID LINE SERVICE VALVE, 3/8" I.D. FEMALE BRAZE CONNECTION WITH 1/4" SAE FLARE PRESSURE TAP FITTING.



GAS LINE SERVICE VALVE, 7/8" I.D. FEMALE BRAZED CONNECTION WITH 1/4" SAE FLARE PRESSURE TAP FITTING.

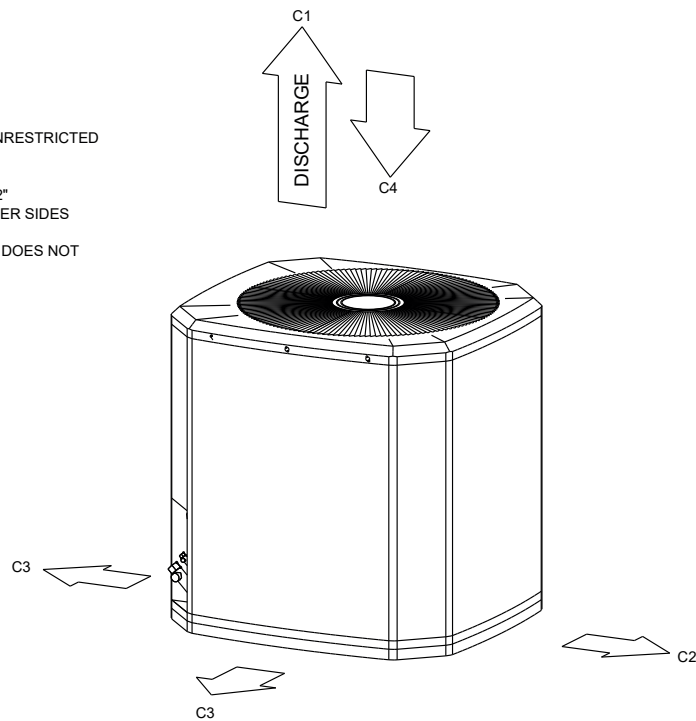
Unit Dimensions – Split System Air Conditioning Unit Matched Exterior Condensers
DST 137 - 5 TON CU: Pairs with DST 124 G2-25
208/230 1 ph

ELECTRICAL / GENERAL DATA

<p>GENERAL</p> <p>Model: 4TTR4048 Voltage: 208 - 230 Unit Hertz: 60 Unit Phase: 1</p>	<p>POWER CONN.</p> <p>Minimum Circuit Ampacity: 24.0 Maximum Circuit Breaker: 40.0 Minimum Protection Rating: 40.0</p>	<p>COMPRESSOR</p> <p>Number: 1 Phase: 1 Rated Load Amps: 18.5 Locked Rotor Amps: 124.0</p>
<p>OUTDOOR MOTOR</p> <p>Number: 1 Horsepower: 0.20 Motor Speed (RPM): - Phase: 1 Full Load Amps: 0.95 Locked Rotor Amps: -</p>	<p>NOTES:</p> <p>1. Certified in accordance with the Unitary Air-Conditioner equipment certification program which is based on AHRI Standard 210/240. 2. Calculated in accordance with N.E.C. Use only HACR circuit breakers or fuses. 3. Standard line lengths - 60'. Standard lift - 60' Suction and Liquid line. For Greater lengths and lifts refer to refrigerant piping software Pub# 32-3312-0 4. * = 15, 20, 25, 30, 40 and 50 foot lineset available.</p>	
<p>REFRIGERANT</p> <p>Type: R-410 Charge: 6.6 lb Line Size O.D. Gas: 7/8" Line Size O.D. LIQ: 3/8"</p>		

WEIGHT	
NET	189.0 lb
SHIPPING	212.0 lb

- NOTES:**
- C1. TOP DISCHARGE SHOULD BE UNRESTRICTED FOR AT LEAST 60" ABOVE UNIT
 - C2. PLACE UNIT FROM WALL
 - C3. PLACE SHRUBBERY AT LEAST 12" FROM UNIT ON TWO SIDES, OTHER SIDES UNRESTRICTED
 - C4. PLACE UNIT SO ROOF RUN-OFF DOES NOT FALL DIRECTLY ON UNIT



WEIGHT AND CLEARANCE

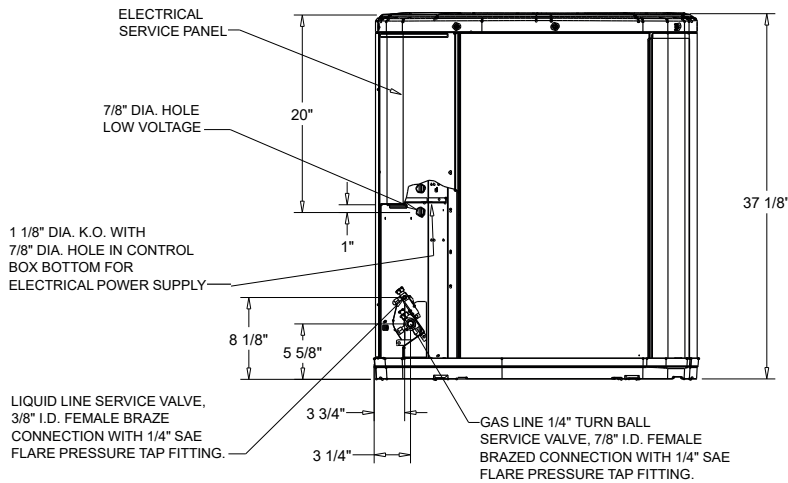
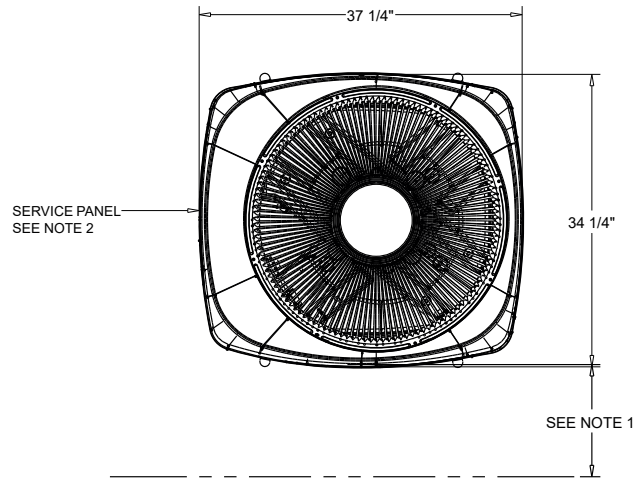
Unit Dimensions – Split System Air Conditioning Unit Matched Exterior Condensers

DST 138 - 5 TON CU: Pairs with DST 124 G2-25

208/230 3 ph

NOTES

1. TOP DISCHARGE AREA SHOULD BE UNRESTRICTED FOR AT LEAST 60" ABOVE UNIT. UNIT SHOULD BE PLACED SO ROOF RUN-OFF WATER DOES NOT POUR DIRECTLY ON UNIT, AND SHOULD BE AT LEAST 12" FROM WALL AND ALL SURROUNDING SHRUBBERY ON TWO SIDES. OTHER TWO SIDES UNRESTRICTED.
2. ELECTRICAL AND REFRIGERANT COMPONENT CLEARANCES PER PREVAILING CODES.
3. VERIFY WEIGHT, CONNECTION, AND ALL DIMENSION WITH INSTALLER DOCUMENTS BEFORE INSTALLATION



4TTA4060

OUTLINE DRAWING

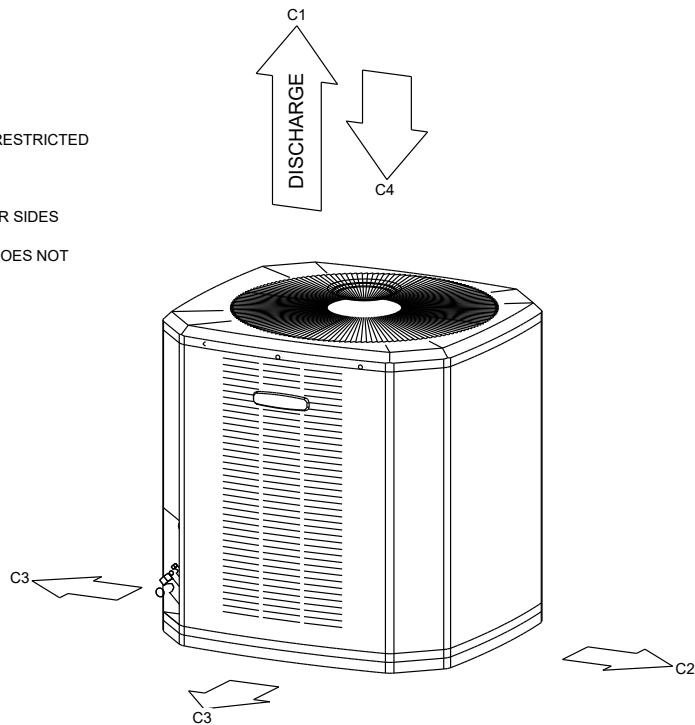
Unit Dimensions – Split System Air Conditioning Unit Matched Exterior Condensers
DST 138 - 5 TON CU: Pairs with DST 124 G2-25
208/230 3 ph

ELECTRICAL / GENERAL DATA

<p>GENERAL</p> <p>Model: 4TTA4060A3000A Operating Voltage: 187-253 Unit Primary Voltage: 208 Unit Secondary Voltage: 230 Unit Hertz: 60 Unit Phase: 3</p>	<p>POWER CONN.</p> <p>Minimum Circuit Ampacity: 21.0 Maximum Circuit Breaker: 35.0 Minimum Protection Rating: 35.0</p>	<p>COMPRESSOR</p> <p>Number: 1 Phase: 3 Rated Load Amps: 15.9 Locked Rotor Amps: 110.0</p>
<p>OUTDOOR MOTOR</p> <p>Number: 1 Horsepower: 0.20 Motor Speed (RPM): - Phase: 1 Full Load Amps: 1.05 Locked Rotor Amps: -</p>	<p>NOTES:</p> <ol style="list-style-type: none"> 1. Certified in accordance with the Unitary Air-Conditioner equipment certification program which is based on AHRI Standard 210/240. 2. Calculated in accordance with N.E.C. Use only HACR circuit breakers or fuses. 3. Standard line lengths - 60'. Standard lift - 60' Suction and Liquid line. For Greater lengths and lifts refer to refrigerant piping software Pub# 32-3312-0 4. * = 15, 20, 25, 30, 40 and 50 foot lineset available. 	
<p>REFRIGERANT</p> <p>Type: R-410A Charge: 7.6 lb Line Size O.D. Gas: 7/8" Line Size O.D. LIQ: 3/8"</p>		

WEIGHT	
NET	211.0 lb
SHIPPING	246.0 lb

- NOTES:**
- C1. TOP DISCHARGE SHOULD BE UNRESTRICTED FOR AT LEAST 60" ABOVE UNIT
 - C2. PLACE UNIT FROM WALL
 - C3. PLACE SHRUBBERY AT LEAST 12" FROM UNIT ON TWO SIDES, OTHER SIDES UNRESTRICTED
 - C4. PLACE UNIT SO ROOF RUN-OFF DOES NOT FALL DIRECTLY ON UNIT



WEIGHT AND CLEARANCE